

For the treatment of **Huntington's disease (HD) chorea** in adults

The Treatment Tracker will help you:

- ✓ **Set HD treatment goals**
- ✓ **Track your progress**
- ✓ **Use helpful tips to stay on track with treatment**
- ✓ **Discuss your treatment journey with your healthcare provider**



APPROVED USES

AUSTEDO XR[®] (deutetrabenazine) extended-release tablets and AUSTEDO[®] (deutetrabenazine) tablets are prescription medicines that are used to treat:

- the involuntary movements (chorea) of Huntington's disease. AUSTEDO XR and AUSTEDO do not cure the cause of the involuntary movements, and it does not treat other symptoms of Huntington's disease, such as problems with thinking or emotions.
- movements in the face, tongue, or other body parts that cannot be controlled (tardive dyskinesia).

It is not known if AUSTEDO XR and AUSTEDO are safe and effective in children.

IMPORTANT SAFETY INFORMATION

AUSTEDO XR[®] and AUSTEDO[®] can cause serious side effects in people with Huntington's disease, including: depression, suicidal thoughts, or suicidal actions. Do not start taking AUSTEDO XR or AUSTEDO if you are depressed (have untreated depression or depression that is not well controlled by medicine) **or** have suicidal thoughts. Pay close attention to any changes, especially sudden changes, in mood, behaviors, thoughts or feelings. This is especially important when AUSTEDO XR or AUSTEDO is started and when the dose is changed. Call your healthcare provider right away if you become depressed, have unusual changes in mood or behavior, or have thoughts of suicide.

Please read **Important Safety Information** on pages 8-9 and click [here](#) or visit www.AUSTEDO.com to read or print the **Medication Guide** for AUSTEDO XR.

HUNTINGTON'S DISEASE (HD) CHOREA TREATMENT GOALS

You and your healthcare team have worked together to develop a plan to treat your HD chorea that includes once-daily AUSTEDO XR® (deutetrabenazine) extended-release tablets. **To help you stay on track with your treatment plan, it's important to first define your goals.**

Here are a few questions to get you started.

Write answers in the spaces provided and share them with your healthcare team, family members, and/or care partners:

1 *What uncontrollable movements are you hoping may improve with treatment?*

2 *What other personal treatment goals have you and/or your healthcare team set?*

3 *What steps have you, your healthcare team, family members, and/or care partners identified to help you achieve your treatment goals?*

97% of HD patients found it easy to include AUSTEDO XR in their daily routine*

*Results from a real-world survey including 31 patients with HD chorea taking AUSTEDO XR.

IMPORTANT SAFETY INFORMATION (CONTINUED)

Do not take AUSTEDO XR or AUSTEDO if you:

- have Huntington's disease and are depressed or have thoughts of suicide.
- have liver problems.

TAKE YOUR MEDICATION AS PRESCRIBED

Life can get busy, and it's not always easy to remember all of your healthcare provider's instructions. **However, it is important that you continue to take once-daily AUSTEDO XR exactly as prescribed.**

AUSTEDO XR® (deutetrabenazine) extended-release tablets should be taken:



Once daily



With water



Whole (do not
crush or break)



With or
without food

If you cannot swallow AUSTEDO XR tablets whole, tell your healthcare provider. You may need a different medicine.

SWITCHING FROM TETRABENAZINE

You can start AUSTEDO XR the day after you stop tetrabenazine. This means you can continue treating your HD chorea without missing a dose.

Be sure to ask your healthcare provider or pharmacist if you have any questions about prescription instructions

IMPORTANT SAFETY INFORMATION (CONTINUED)

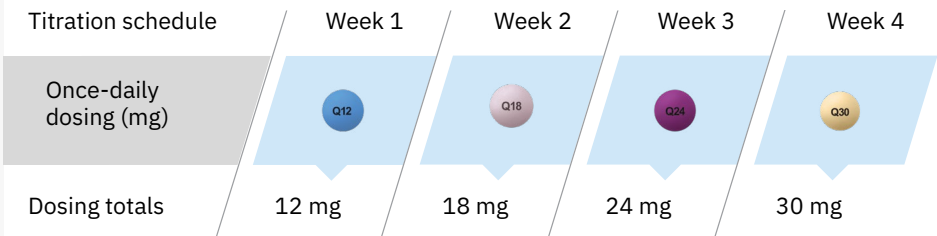
Do not take AUSTEDO XR or AUSTEDO if you:

- are taking reserpine. **Do not** take medicines that contain reserpine with AUSTEDO XR or AUSTEDO. If your healthcare provider plans to switch you from taking reserpine to AUSTEDO XR or AUSTEDO, you must wait at least 20 days after your last dose of reserpine before you start taking AUSTEDO XR or AUSTEDO.

A PERSONALIZED APPROACH TO DOSING

Your healthcare provider will start you at a low dose of AUSTEDO XR® (deutetrabenazine) extended-release tablets and gradually increase your dose over time. This approach allows your body to get used to the medication and can help with side effects as movements are reduced. This way, your healthcare provider can find a dose that works for you. This process is called titration.

This is the dosing schedule for the Titration Kit.



Pills are for illustration only and not actual size or likeness.

Average dose for people in the AUSTEDO studies was above 36 mg/day



Talk to your healthcare provider *to discuss next steps once your kit is completed*

IMPORTANT SAFETY INFORMATION (CONTINUED)

Do not take AUSTEDO XR or AUSTEDO if you:

- are taking a monoamine oxidase inhibitor (MAOI) medicine. **Do not** take an MAOI within 14 days after you stop taking AUSTEDO XR or AUSTEDO. **Do not** start AUSTEDO XR or AUSTEDO if you stopped taking an MAOI in the last 14 days. Ask your healthcare provider or pharmacist if you are not sure.

STAYING ON TRACK

It's important to take once-daily AUSTEDO XR® (deutetrabenazine) extended-release tablets as prescribed. Use these tips to help you stay on track:



Have a plan

- Before starting AUSTEDO XR, talk to your healthcare provider about what to do if you miss a dose
- Add your dosing schedule to your other daily routines so you will be less likely to miss a dose
- Tell your healthcare provider if you stop taking AUSTEDO XR for more than 1 week. Do not take another dose until you talk to your healthcare provider



Set a routine

- Follow the dosing schedule exactly as prescribed by your healthcare provider
- Set an alarm as a treatment reminder
- Keep your AUSTEDO XR tablets in the same place so you know where they are



Record your treatment

- Use the Progress Tracker and Activity Log included in this guide starting on page 10 to record when AUSTEDO XR is taken and any questions you have for your healthcare provider



Reach your appropriate dose

- Work with your healthcare provider to find the dose of AUSTEDO XR that works for you
- It's important to take AUSTEDO XR exactly as your healthcare provider prescribes it
- Your healthcare provider may adjust your dose up or down in the first few weeks of treatment based on reduction of movements and how well the medicine is tolerated

IMPORTANT SAFETY INFORMATION (CONTINUED)

Do not take AUSTEDO XR or AUSTEDO if you:

- are taking tetrabenazine. If your healthcare provider plans to switch you from tetrabenazine to AUSTEDO XR or AUSTEDO, take your first dose of AUSTEDO XR or AUSTEDO on the day after your last dose of tetrabenazine.
- are taking valbenazine.

FREQUENTLY ASKED QUESTIONS

It's normal to have questions when starting a new medication. Here are some questions from people living with HD chorea and care partners, with answers provided by a healthcare professional:

Q: Why were AUSTEDO XR® (deutetrabenazine) extended-release tablets prescribed for me?

A: Your healthcare provider likely considered the impact HD chorea was having on your life and prescribed AUSTEDO XR. In a clinical study, AUSTEDO® (deutetrabenazine) tablets were effective for the treatment of HD chorea. People taking AUSTEDO saw more than 2x reduction in Huntington's disease (HD) chorea vs placebo in a 12-week study.*

*4.4-point improvement in people taking AUSTEDO vs 1.9 in people taking placebo based on Total Maximal Chorea (TMC) score. The TMC score is used to measure HD chorea movements in the face, mouth, trunk, both arms, and both legs.

Q: How will I know if AUSTEDO XR is working?

A: HD chorea affects everyone differently, so treatment results may vary from person to person. While some people may start to experience treatment benefits sooner, it may take up to 12 weeks to see the effects of AUSTEDO XR.

Q: What happens if I miss a dose?

A: Before starting AUSTEDO XR, talk to your healthcare provider about what to do if you/the person you're caring for forget(s) a dose. Also, tell your healthcare provider if you/they stop taking AUSTEDO XR for more than 1 week. Do not take another dose until you talk to your healthcare provider. Using the Progress Tracker and Activity Log in this guide will help you remember to take your daily medication as prescribed.

IMPORTANT SAFETY INFORMATION (CONTINUED)

Other possible serious side effects include:

- **Irregular heartbeat (QT prolongation).** AUSTEDO XR and AUSTEDO increases your chance of having certain changes in the electrical activity in your heart. These changes can lead to a dangerous abnormal heartbeat. Taking AUSTEDO XR or AUSTEDO with certain medicines may increase this chance.

Q: Why might my healthcare provider adjust my dose?

A: Your healthcare provider will start you at a low dose and gradually increase your dose over time. This approach allows your body to get used to the medication and can help with side effects as movements are reduced. This way, your healthcare provider can find a dose that works for you. This process is called titration.

Q: What happens when I reach my appropriate dose?

A: Once your healthcare provider determines the dose of AUSTEDO XR® (deutetrabenazine) extended-release tablets that's right for you, that will become your maintenance dose. It's important to track your progress (using the Progress Tracker included in this guide) both during the initial titration period and once your maintenance dose is established so your treatment plan can be adjusted if something changes.

Q: Are there side effects?

A: As with any medication, it's always important to discuss possible side effects with your healthcare provider before you start taking AUSTEDO XR. It's also important to keep your healthcare provider informed about how you're feeling throughout treatment. If something doesn't feel right, tell your healthcare provider so your treatment plan can be adjusted as necessary.

Once-daily AUSTEDO XR contains the same active ingredient as AUSTEDO® (deutetrabenazine) tablets. Data on this page is based on twice-daily dosing.

IMPORTANT SAFETY INFORMATION (CONTINUED)

Other possible serious side effects include:

- **Neuroleptic Malignant Syndrome.** Call your healthcare provider right away and go to the nearest emergency room if you develop these signs and symptoms that do not have another obvious cause: high fever, stiff muscles, problems thinking, very fast or uneven heartbeat, or increased sweating.

APPROVED USES

AUSTEDO XR® (deutetrabenazine) extended-release tablets and AUSTEDO® (deutetrabenazine) tablets are prescription medicines that are used to treat:

- the involuntary movements (chorea) of Huntington's disease. AUSTEDO XR and AUSTEDO do not cure the cause of the involuntary movements, and it does not treat other symptoms of Huntington's disease, such as problems with thinking or emotions.
- movements in the face, tongue, or other body parts that cannot be controlled (tardive dyskinesia).

It is not known if AUSTEDO XR and AUSTEDO are safe and effective in children.

IMPORTANT SAFETY INFORMATION

AUSTEDO XR® and AUSTEDO® can cause serious side effects in people with Huntington's disease, including: depression, suicidal thoughts, or suicidal actions. Do not start taking AUSTEDO XR or AUSTEDO if you are depressed (have untreated depression or depression that is not well controlled by medicine) **or** have suicidal thoughts. Pay close attention to any changes, especially sudden changes, in mood, behaviors, thoughts or feelings. This is especially important when AUSTEDO XR or AUSTEDO is started and when the dose is changed. Call your healthcare provider right away if you become depressed, have unusual changes in mood or behavior, or have thoughts of suicide.

Do not take AUSTEDO XR or AUSTEDO if you:

- have Huntington's disease and are depressed or have thoughts of suicide.
- have liver problems.
- are taking reserpine. **Do not** take medicines that contain reserpine with AUSTEDO XR or AUSTEDO. If your healthcare provider plans to switch you from taking reserpine to AUSTEDO XR or AUSTEDO, you must wait at least 20 days after your last dose of reserpine before you start taking AUSTEDO XR or AUSTEDO.
- are taking a monoamine oxidase inhibitor (MAOI) medicine. **Do not** take an MAOI within 14 days after you stop taking AUSTEDO XR or AUSTEDO. **Do not** start AUSTEDO XR or AUSTEDO if you stopped taking an MAOI in the last 14 days. Ask your healthcare provider or pharmacist if you are not sure.
- are taking tetrabenazine. If your healthcare provider plans to switch you from tetrabenazine to AUSTEDO XR or AUSTEDO, take your first dose of AUSTEDO XR or AUSTEDO on the day after your last dose of tetrabenazine.
- are taking valbenazine.

IMPORTANT SAFETY INFORMATION (CONTINUED)

Other possible serious side effects include:

- **Irregular heartbeat (QT prolongation).** AUSTEDO XR® and AUSTEDO® increases your chance of having certain changes in the electrical activity in your heart. These changes can lead to a dangerous abnormal heartbeat. Taking AUSTEDO XR or AUSTEDO with certain medicines may increase this chance.
- **Neuroleptic Malignant Syndrome.** Call your healthcare provider right away and go to the nearest emergency room if you develop these signs and symptoms that do not have another obvious cause: high fever, stiff muscles, problems thinking, very fast or uneven heartbeat, or increased sweating.
- **Restlessness.** You may get a condition where you feel a strong urge to move. This is called akathisia.
- **Parkinsonism.** Symptoms include: slight shaking, body stiffness, trouble moving, trouble keeping your balance, or falls.

Sleepiness (sedation) is a common side effect of AUSTEDO XR and AUSTEDO. While taking AUSTEDO XR or AUSTEDO, do not drive a car or operate dangerous machinery until you know how AUSTEDO XR or AUSTEDO affects you. Drinking alcohol and taking other drugs that may also cause sleepiness while you are taking AUSTEDO XR or AUSTEDO may increase any sleepiness caused by AUSTEDO XR and AUSTEDO.

The most common side effects of AUSTEDO in people with Huntington's disease include sleepiness (sedation), diarrhea, tiredness, and dry mouth.

The most common side effects of AUSTEDO in people with tardive dyskinesia include inflammation of the nose and throat (nasopharyngitis) and problems sleeping (insomnia).

The most common side effects of AUSTEDO XR are expected to be similar to AUSTEDO in people with Huntington's disease or tardive dyskinesia.

These are not all the possible side effects of AUSTEDO XR or AUSTEDO. Call your doctor for medical advice about side effects. You are encouraged to report side effects of prescription drugs to the FDA. Visit www.fda.gov/medwatch or call **1-800-FDA-1088**.

Please read the accompanying **Medication Guide**.

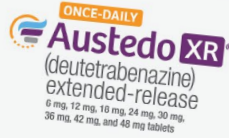
PROGRESS TRACKER AND ACTIVITY LOG

- 1** **Use this progress tracker daily to help you achieve your treatment goals with once-daily AUSTEDO XR® (deutetrabenazine) extended-release tablets**
 - 1a** **Write the Week #** (eg, week 1) and the month/day/year you start treatment.
 - 1b** **Check the “Titrated” box** if you are still in the process of working with your healthcare provider to find the dose that’s effective for you.
Check the “Maintenance” box if you already found your effective dose so you’re able to track it over time to ensure it’s the most appropriate dose for your needs.
 - 1c** **Note your prescribed dose for that week** given to you by your healthcare provider. Track progress both during the titration period and with the maintenance dose so your treatment plan can be adjusted if something changes.
- 2** **Record changes in movements in the activity log**
Evaluate your movements each week and the impact they’ve had on your daily life as compared to the previous week.
- 3** **Keep notes to discuss with your healthcare provider during your next visit**

DON'T FORGET REFILLS

Need additional Progress Tracker and Activity Log sheets? Download more at www.AUSTEDO.com/huntingtons-chorea/resources. Remember to bring your completed log sheets to upcoming appointments to help you discuss your progress with your healthcare provider.

For the treatment of chorea associated with **Huntington's disease (HD)** in a



1a → Week # 2

1b → Titrated:

Indicate your dose for the week

Q6 Q12 Q18 18 Q24
 Q30 Q36 Q42 Q48

Check each box after taking your daily dose

SUN	MON	TUES	WED	THURS	FRI	SAT
<input checked="" type="checkbox"/>	<input checked="" type="checkbox"/>	<input type="checkbox"/>	<input type="checkbox"/>	<input type="checkbox"/>	<input type="checkbox"/>	<input type="checkbox"/>

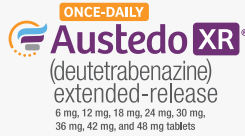
Rate your ability to do daily activities compared to last week
 At the end of each week, take a few minutes to evaluate your uncontrollable movements and the impact of HD chorea on your ability to perform certain activities compared to last week.

2 →

Uncontrollable Movements			Personal Care			Additional Daily Activities		
<input checked="" type="checkbox"/> better	<input type="checkbox"/> same	<input type="checkbox"/> worse	<input type="checkbox"/> better	<input checked="" type="checkbox"/> same	<input type="checkbox"/> worse	<input type="checkbox"/> better	<input checked="" type="checkbox"/> same	<input type="checkbox"/> worse
Examples: • face • torso • mouth • legs • arms			Examples: • bathing • getting dressed • brushing your teeth			Examples: • eating and drinking • making phone calls • typing on the computer		

3 → **This week I accomplished**

Questions to discuss with my healthcare provider



Week # _____

____/____/____

Indicate your dose for the week

Titrated:				
Maintenance:				

Check each box after taking your daily dose

SUN	MON	TUES	WED	THURS	FRI	SAT
<input type="checkbox"/>	<input type="checkbox"/>	<input type="checkbox"/>	<input type="checkbox"/>	<input type="checkbox"/>	<input type="checkbox"/>	<input type="checkbox"/>

Rate your ability to do daily activities compared to last week

At the end of each week, take a few minutes to evaluate your uncontrollable movements and rate the impact of Huntington's disease (HD) chorea on your ability to perform certain activities compared to last week.

Uncontrollable Movements

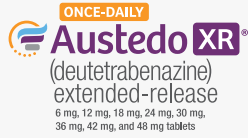
Personal Care

Additional Daily Activities

Uncontrollable Movements			Personal Care			Additional Daily Activities		
better	same	worse	better	same	worse	better	same	worse
Examples: <ul style="list-style-type: none"> • face • mouth • arms • torso • legs 			Examples: <ul style="list-style-type: none"> • bathing • getting dressed • brushing your teeth 			Examples: <ul style="list-style-type: none"> • eating and drinking • making phone calls • typing on the computer 		

This week I accomplished

Questions to discuss with my healthcare provider



Week # _____

____/____/____

Indicate your dose for the week

Titrated:				
Maintenance:				

Check each box after taking your daily dose

SUN	MON	TUES	WED	THURS	FRI	SAT
<input type="checkbox"/>	<input type="checkbox"/>	<input type="checkbox"/>	<input type="checkbox"/>	<input type="checkbox"/>	<input type="checkbox"/>	<input type="checkbox"/>

Rate your ability to do daily activities compared to last week

At the end of each week, take a few minutes to evaluate your uncontrollable movements and rate the impact of Huntington's disease (HD) chorea on your ability to perform certain activities compared to last week.

Uncontrollable Movements

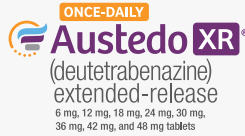
Personal Care

Additional Daily Activities

Uncontrollable Movements			Personal Care			Additional Daily Activities		
better	same	worse	better	same	worse	better	same	worse
Examples: <ul style="list-style-type: none"> • face • mouth • arms • torso • legs 			Examples: <ul style="list-style-type: none"> • bathing • getting dressed • brushing your teeth 			Examples: <ul style="list-style-type: none"> • eating and drinking • making phone calls • typing on the computer 		

This week I accomplished

Questions to discuss with my healthcare provider



Week # _____

____/____/____

Indicate your dose for the week

Titrated:				
Maintenance:				

Check each box after taking your daily dose

SUN	MON	TUES	WED	THURS	FRI	SAT
<input type="checkbox"/>	<input type="checkbox"/>	<input type="checkbox"/>	<input type="checkbox"/>	<input type="checkbox"/>	<input type="checkbox"/>	<input type="checkbox"/>

Rate your ability to do daily activities compared to last week

At the end of each week, take a few minutes to evaluate your uncontrollable movements and rate the impact of Huntington's disease (HD) chorea on your ability to perform certain activities compared to last week.

Uncontrollable Movements

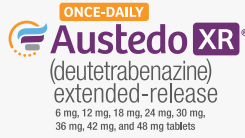
Personal Care

Additional Daily Activities

better	same	worse	better	same	worse	better	same	worse
Examples: <ul style="list-style-type: none"> • face • mouth • arms • torso • legs 			Examples: <ul style="list-style-type: none"> • bathing • getting dressed • brushing your teeth 			Examples: <ul style="list-style-type: none"> • eating and drinking • making phone calls • typing on the computer 		

This week I accomplished

Questions to discuss with my healthcare provider



Week # _____

____/____/____

Indicate your dose for the week

Titrated:				
Maintenance:				

Check each box after taking your daily dose

SUN	MON	TUES	WED	THURS	FRI	SAT
<input type="checkbox"/>	<input type="checkbox"/>	<input type="checkbox"/>	<input type="checkbox"/>	<input type="checkbox"/>	<input type="checkbox"/>	<input type="checkbox"/>

Rate your ability to do daily activities compared to last week

At the end of each week, take a few minutes to evaluate your uncontrollable movements and rate the impact of Huntington's disease (HD) chorea on your ability to perform certain activities compared to last week.

Uncontrollable Movements

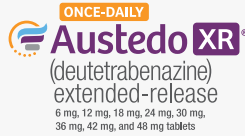
Personal Care

Additional Daily Activities

Uncontrollable Movements			Personal Care			Additional Daily Activities		
better	same	worse	better	same	worse	better	same	worse
Examples: <ul style="list-style-type: none"> • face • mouth • arms • torso • legs 			Examples: <ul style="list-style-type: none"> • bathing • getting dressed • brushing your teeth 			Examples: <ul style="list-style-type: none"> • eating and drinking • making phone calls • typing on the computer 		

This week I accomplished

Questions to discuss with my healthcare provider



Week # _____

____/____/____

Indicate your dose for the week

Titrated:				
Maintenance:				

Check each box after taking your daily dose

SUN	MON	TUES	WED	THURS	FRI	SAT
<input type="checkbox"/>	<input type="checkbox"/>	<input type="checkbox"/>	<input type="checkbox"/>	<input type="checkbox"/>	<input type="checkbox"/>	<input type="checkbox"/>

Rate your ability to do daily activities compared to last week

At the end of each week, take a few minutes to evaluate your uncontrollable movements and rate the impact of Huntington's disease (HD) chorea on your ability to perform certain activities compared to last week.

Uncontrollable Movements

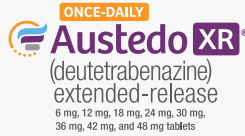
Personal Care

Additional Daily Activities

Uncontrollable Movements			Personal Care			Additional Daily Activities		
better	same	worse	better	same	worse	better	same	worse
Examples: <ul style="list-style-type: none"> • face • mouth • arms • torso • legs 			Examples: <ul style="list-style-type: none"> • bathing • getting dressed • brushing your teeth 			Examples: <ul style="list-style-type: none"> • eating and drinking • making phone calls • typing on the computer 		

This week I accomplished

Questions to discuss with my healthcare provider



Week # _____

____/____/____

Indicate your dose for the week

Titrated:				

Check each box after taking your daily dose

SUN	MON	TUES	WED	THURS	FRI	SAT
<input type="checkbox"/>	<input type="checkbox"/>	<input type="checkbox"/>	<input type="checkbox"/>	<input type="checkbox"/>	<input type="checkbox"/>	<input type="checkbox"/>

Rate your ability to do daily activities compared to last week

At the end of each week, take a few minutes to evaluate your uncontrollable movements and rate the impact of Huntington's disease (HD) chorea on your ability to perform certain activities compared to last week.

Uncontrollable Movements

Personal Care

Additional Daily Activities

Uncontrollable Movements			Personal Care			Additional Daily Activities		
better	same	worse	better	same	worse	better	same	worse
Examples: <ul style="list-style-type: none"> • face • mouth • arms • torso • legs 			Examples: <ul style="list-style-type: none"> • bathing • getting dressed • brushing your teeth 			Examples: <ul style="list-style-type: none"> • eating and drinking • making phone calls • typing on the computer 		

This week I accomplished

Questions to discuss with my healthcare provider

MEDICAL INFORMATION

AUSTEDO XR® (deutetrabenazine) extended-release tablets start date:

Neurologist: _____

Phone number: _____

Address: _____

Social Worker/Counselor: _____

Phone number: _____

Address: _____

Psychologist: _____

Phone number: _____

Address: _____

Pharmacy: _____

Phone number: _____

Address: _____

Primary Care Physician: _____

Phone number: _____

Address: _____

teva Total Support
Start your enrollment today!



1-800-887-8100
M-F, 9AM to 8PM ET

Or visit [TevaTotalSupportHD.com](https://www.TevaTotalSupportHD.com)

APPOINTMENT RECORD

Record your next appointment date in the space provided.

My next appointment is:

MONTH:

DAY:

TIME:

AM/PM

NOTES:

My next appointment is:

MONTH:

DAY:

TIME:

AM/PM

NOTES:

My next appointment is:

MONTH:

DAY:

TIME:

AM/PM

NOTES:

My next appointment is:

MONTH:

DAY:

TIME:

AM/PM

NOTES:

My next appointment is:

MONTH:

DAY:

TIME:

AM/PM

NOTES:

My next appointment is:

MONTH:

DAY:

TIME:

AM/PM

NOTES:

IT'S SIMPLE TO ENROLL IN TEVA TOTAL SUPPORT™

From benefits verification and financial assistance to nurses available to support you, we provide patient and care partner support at any point in the treatment journey.



**Starting
treatment**

**Savings and
financial support**

**Staying on
treatment**

Teva **Total Support** can help you achieve your treatment goals. If you have any questions while setting goals and tracking progress with once-daily AUSTEDO XR® (deutetrabenazine) extended-release tablets, we're here to assist.

Enroll in Teva Total Support



1-800-887-8100
M-F, 9AM to 8PM ET

OR

through our website anytime
at [TevaTotalSupportHD.com](https://www.TevaTotalSupportHD.com)

IMPORTANT SAFETY INFORMATION

AUSTEDO XR® and AUSTEDO® can cause serious side effects in people with Huntington's disease, including: depression, suicidal thoughts, or suicidal actions. Do not start taking AUSTEDO XR or AUSTEDO if you are depressed (have untreated depression or depression that is not well controlled by medicine) **or** have suicidal thoughts. Pay close attention to any changes, especially sudden changes, in mood, behaviors, thoughts or feelings. This is especially important when AUSTEDO XR or AUSTEDO is started and when the dose is changed. Call your healthcare provider right away if you become depressed, have unusual changes in mood or behavior, or have thoughts of suicide.

Please read **Important Safety Information** on pages 8-9 and click [here](#) or visit www.AUSTEDO.com to read or print the **Medication Guide** for AUSTEDO XR.